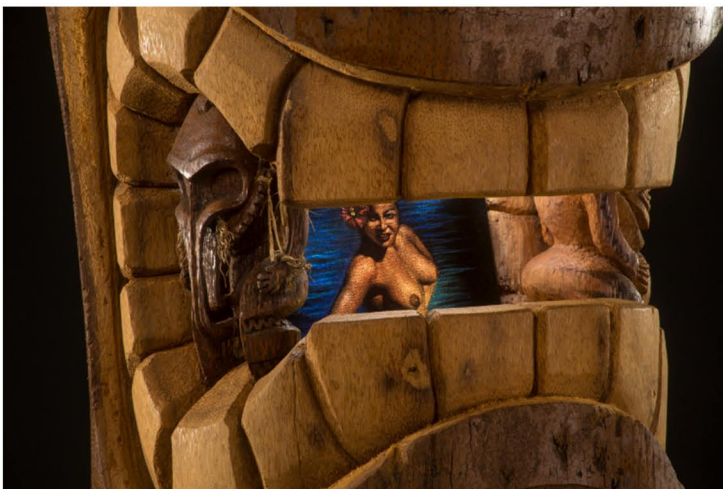


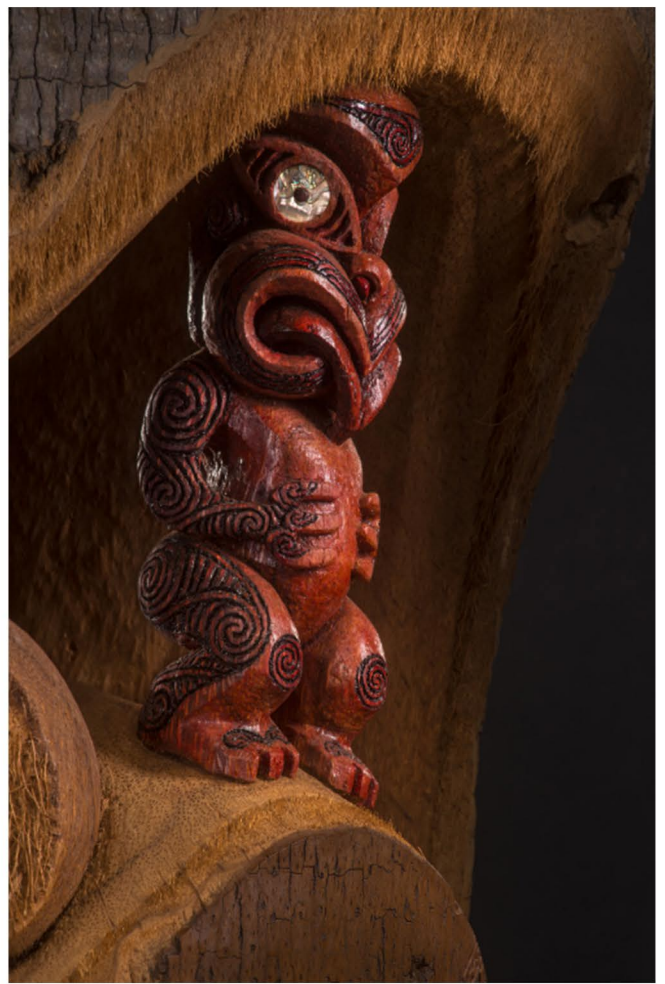
LA LUZ DE JESUS GALLERY

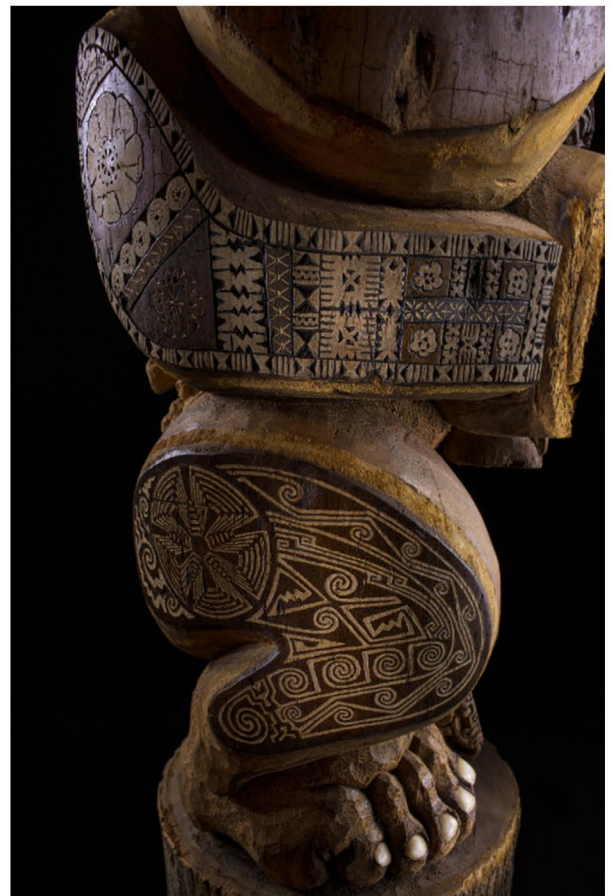
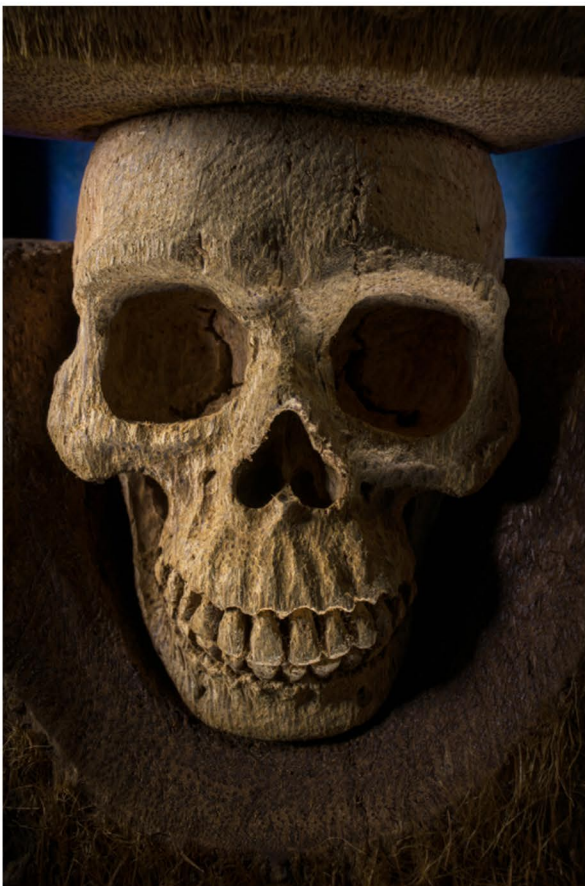
4633 Hollywood Blvd. Los Angeles, CA 90027 (323)666-7667 laluzdejesus.com



This piece is a tribute to Crazy Al Evans' 20 year body of work exploring primitive art. It is one piece, having been carved entirely from the base section of a Mexican Fan Palm. The existing root ball, now headdress, grounds Tiki #200 to primitive sentiments of nature. This tiki pays tribute to the Polynesian influences in Al's work. In the sensory orifices, and at the heart of the tiki, one will find very accurately 'carved figure' examples from the major Pacific Island groups. Included also is the ancestral cranium fetish of New Guinea via an anatomically correct, carved, human skull. The fantastic craftsmanship of Mayan design is seen in a deity phallus depicting Kukulcan. The recreation of Samoan and Tongan wood reliefs convey the backbone of Al's work, the ages old obsession with detail. An anatomically correct, carved spine joins the serviceable arms to the supporting legs. Very detailed and accurate depictions of influential Fijian tapa cloth designs cover the arms. The foundation of Tiki #200 stands upon legs covered in graphic etchings. Here, from Al Evans' birth place of the Sonora Desert, the intricately complex basket and pottery design of the ancient Anasazi-Hohokam have been utilized. The beach-combed sea shell fragments and velvet painted miniatures of passed Evans work have also found a place in this extraordinary sculpture. This is the second tiki in which Al has added realistic toenails to his characteristically realistic rendered feet. The consuming oral cavity accommodates the exalted sustenance of the "Wahini."









Crazy Al Evans
Tiki 200 (Opus)
75x32x32"
\$80,000