

# THE BEGINNING OF THE END

Myah London-Harwell · Heath Quiel  
Dion Macellari · Visible Damage  
Juri Umigami · Annette Hassell  
Bruce Parker · Douglas Cason



Eight Person Exhibition · Exhibits Jan 3 - Feb 2  
Opening Reception: Friday Jan 3rd, 7 - 11pm  
4633 Hollywood Blvd · La Luz de Jesus Gallery

## Exhibition Preview

Myah London-Harwell

Bruce Parker

Visible Damage

Juri Umagami

Heath Quiel

Douglas Cason

Dion Macellari

Annette Hassell

[pages 2 - 10](#)

[pages 11 - 35](#)

[pages 36 - 47](#)

[pages 48 - 55](#)

[pages 56 - 61](#)

[pages 62 - 69](#)

[pages 70 - 81](#)

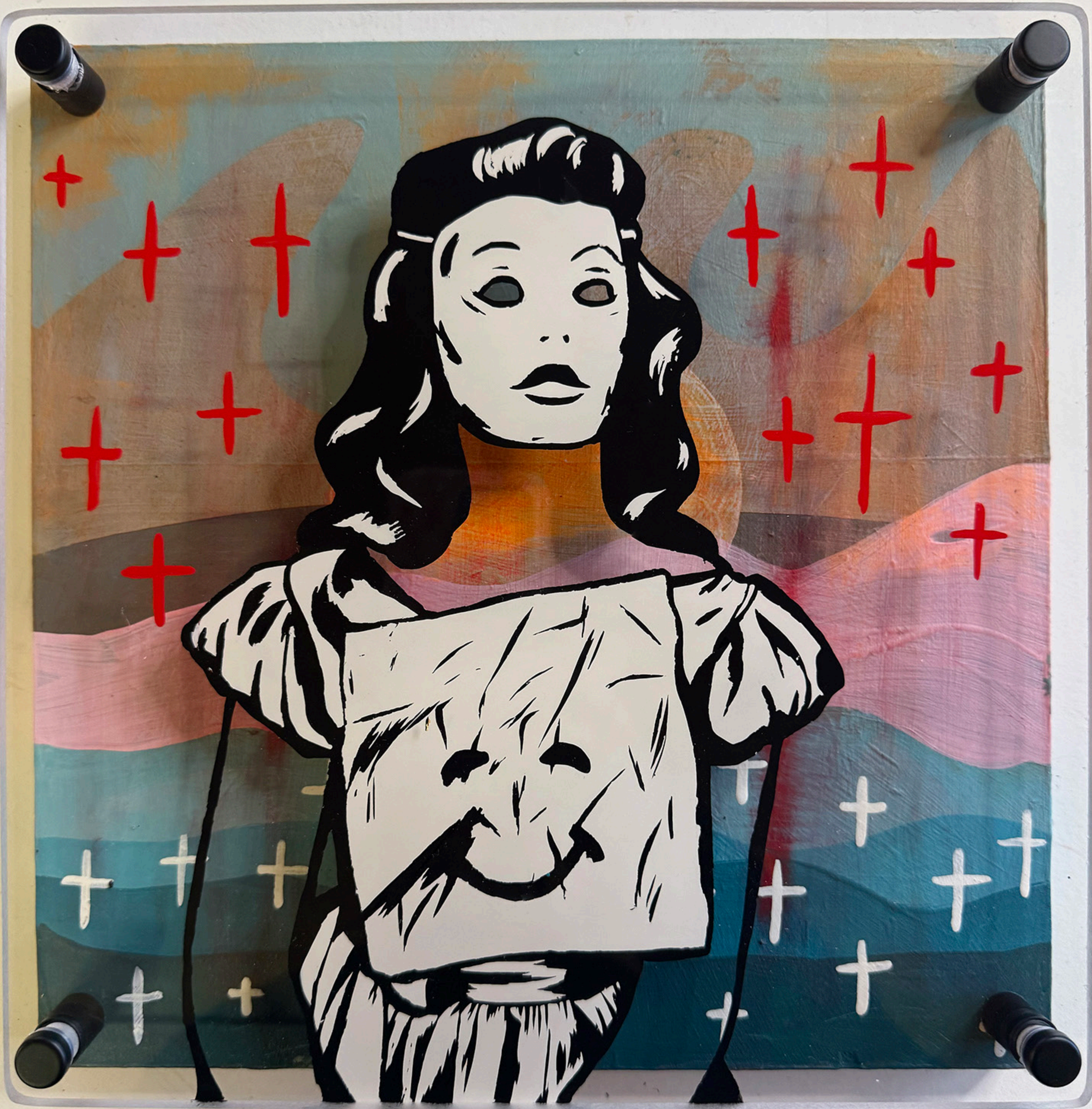
[pages 82 - 89](#)





Myah London-Harwell - Midnight Hunter  
acrylic on plexi and panel  
10 x 10 inches





Myah London-Harwell - Its Ok To Be Happy  
acrylic on plexi and panel  
10 x 10 inches  
SOLD





Myah London-Harwell - Let's Pretend  
acrylic on plexi and panel  
10 x 10 inches





Myah London-Harwell - Amour Fou  
acrylic on plexi and panel  
10 x 10 inches





Myah London-Harwell - Night Drive  
acrylic on plexi and panel  
12 x 12 inches  
SOLD





Myah London-Harwell - Pick One  
acrylic on plexi and panel  
12 x 12 inches





Myah London-Harwell - Kind Of  
acrylic on plexi and panel  
18 x 24 inches





Myah London-Harwell - The Boxed Heart  
acrylic on plexi and panel  
18 x 24 inches  
SOLD





Myah London-Harwell - Everything  
acrylic on plexi and panel  
24 x 30 inches





Bruce Parker - Bamboozle  
acrylic, ink on wood  
6 x 6 inches





Bruce Parker - Dream Team  
acrylic, ink on wood  
9 x 11 inches





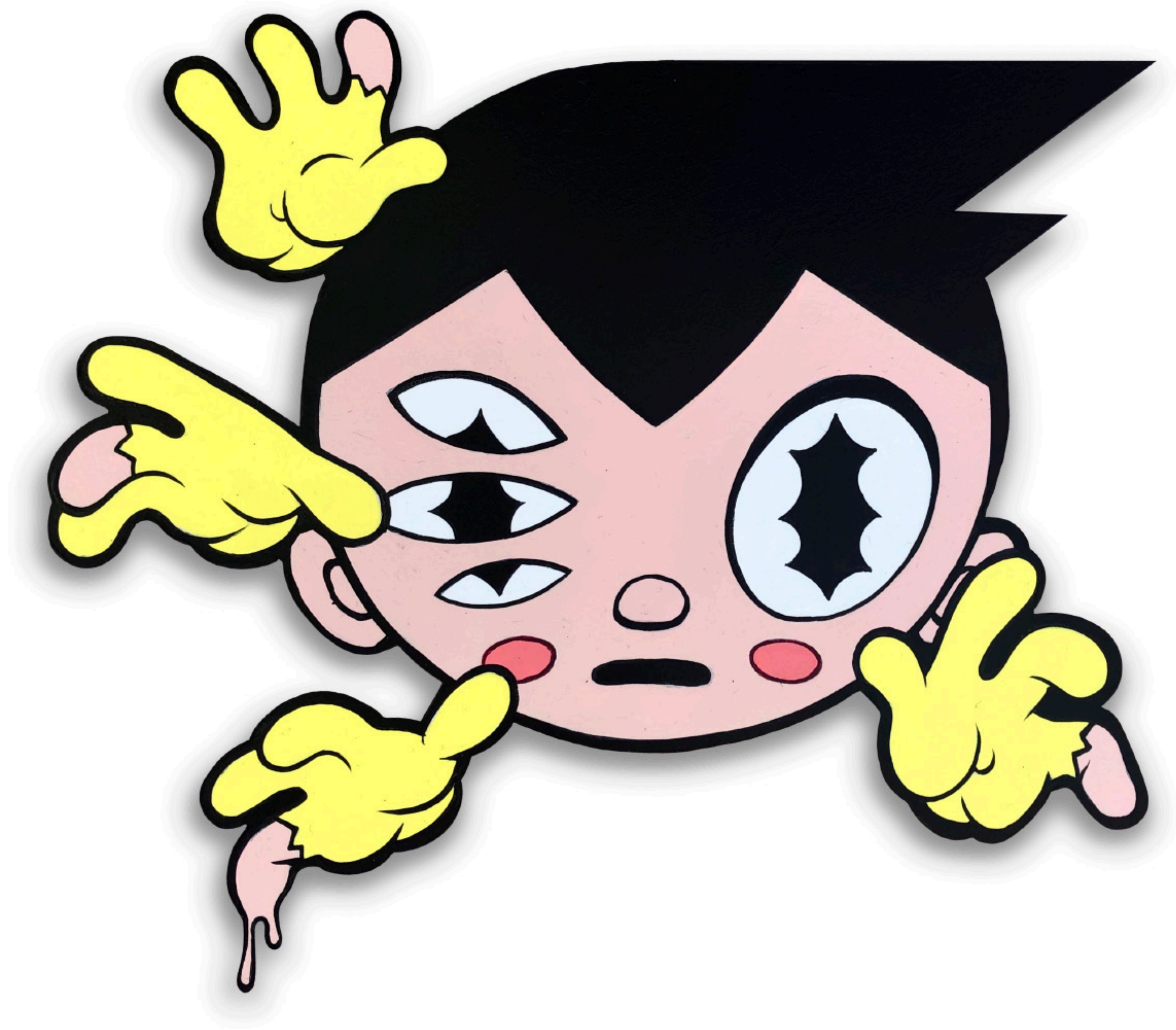
Bruce Parker - Enemy no 1  
acrylic, ink on wood  
10 x 10 inches





Bruce Parker - Enemy no 2  
acrylic, ink on wood  
7 x 9 inches





Bruce Parker - Enemy no 3  
acrylic, ink on wood  
8 x 10 inches  
SOLD





Bruce Parker - Good Morning  
acrylic, ink on wood  
14 x 9 inches





Bruce Parker - Grow Up  
acrylic, ink on wood  
8 x 10 inches





Bruce Parker - Let Go  
acrylic, ink on wood  
8 x 10 inches





Bruce Parker - Look Forward  
acrylic, ink on wood  
6 x 6 inches





Bruce Parker - Lookout  
acrylic, ink on wood  
10 x 10 inches  
SOLD





Bruce Parker - Miss Direction  
acrylic, ink on wood  
14 x 14 inches





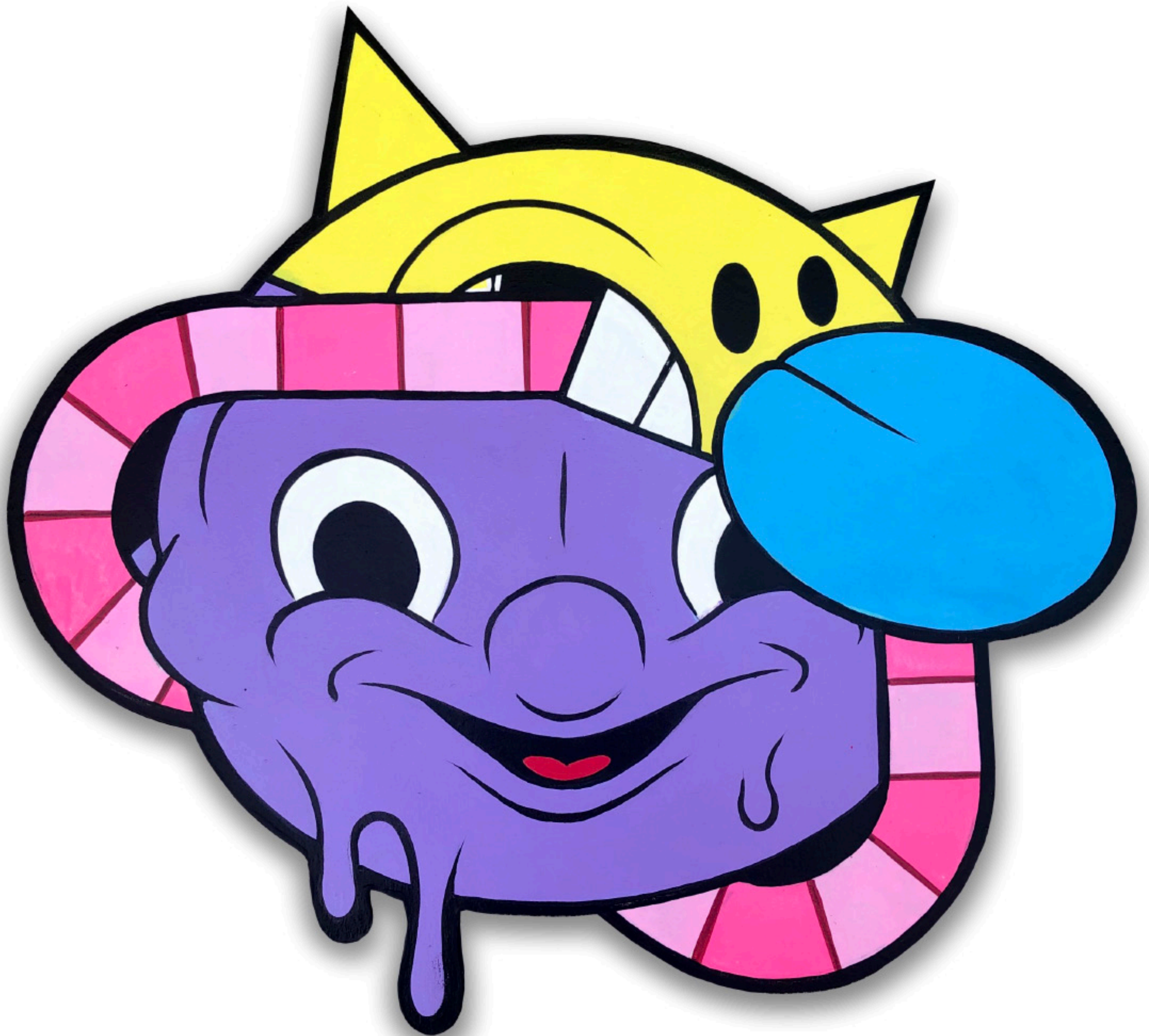
Bruce Parker - Over and Out  
acrylic, ink on wood  
8 x 9 inches





Bruce Parker - Peek-a-blue  
acrylic, ink on wood  
14 x 12 inches





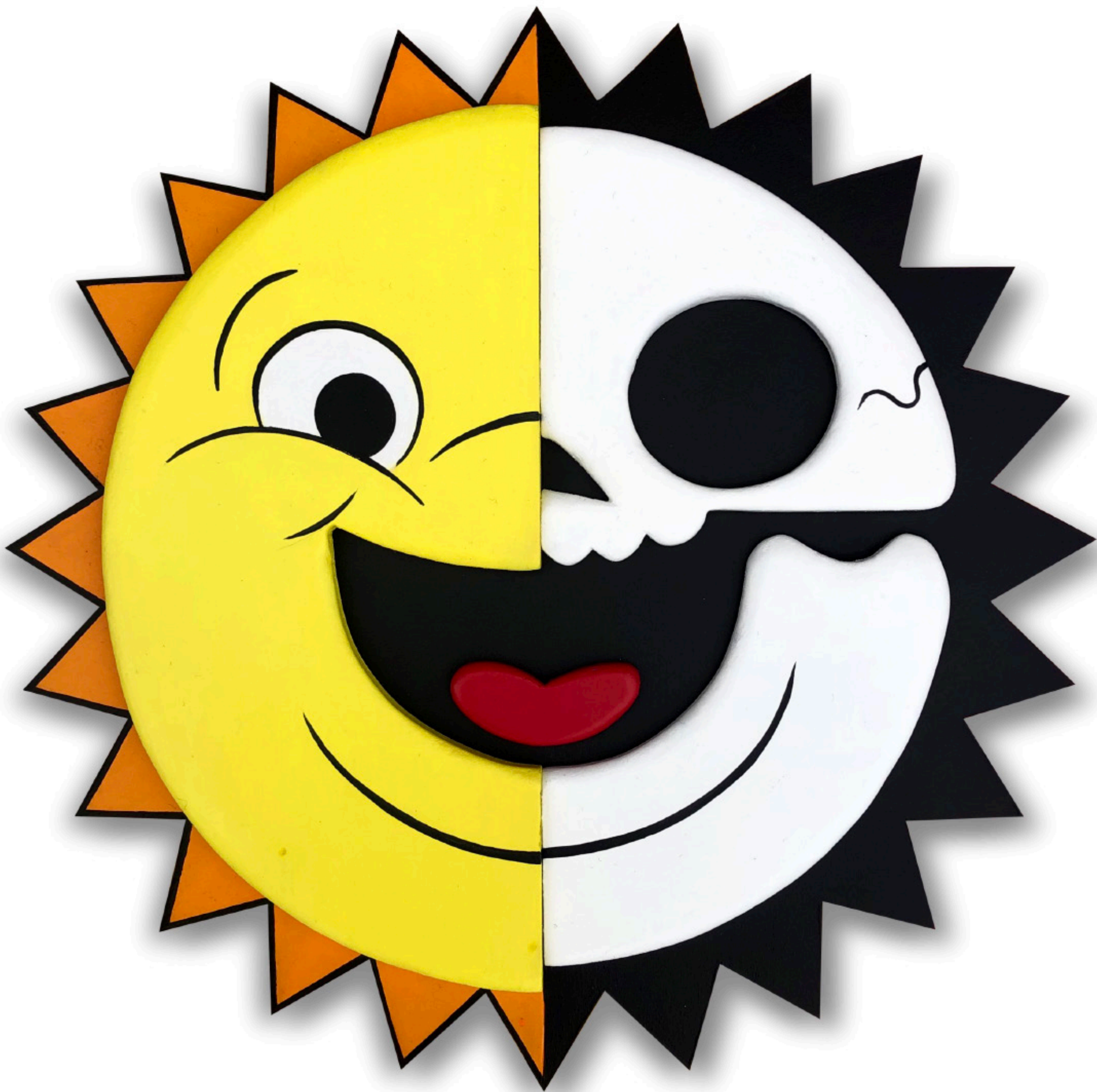
Bruce Parker - Relax  
acrylic, ink on wood  
10 x 10 inches





Bruce Parker - Seen Queen  
acrylic, ink on wood  
6 x 6 inches





Bruce Parker - Skullshine  
acrylic, ink on wood  
12 x 12 inches





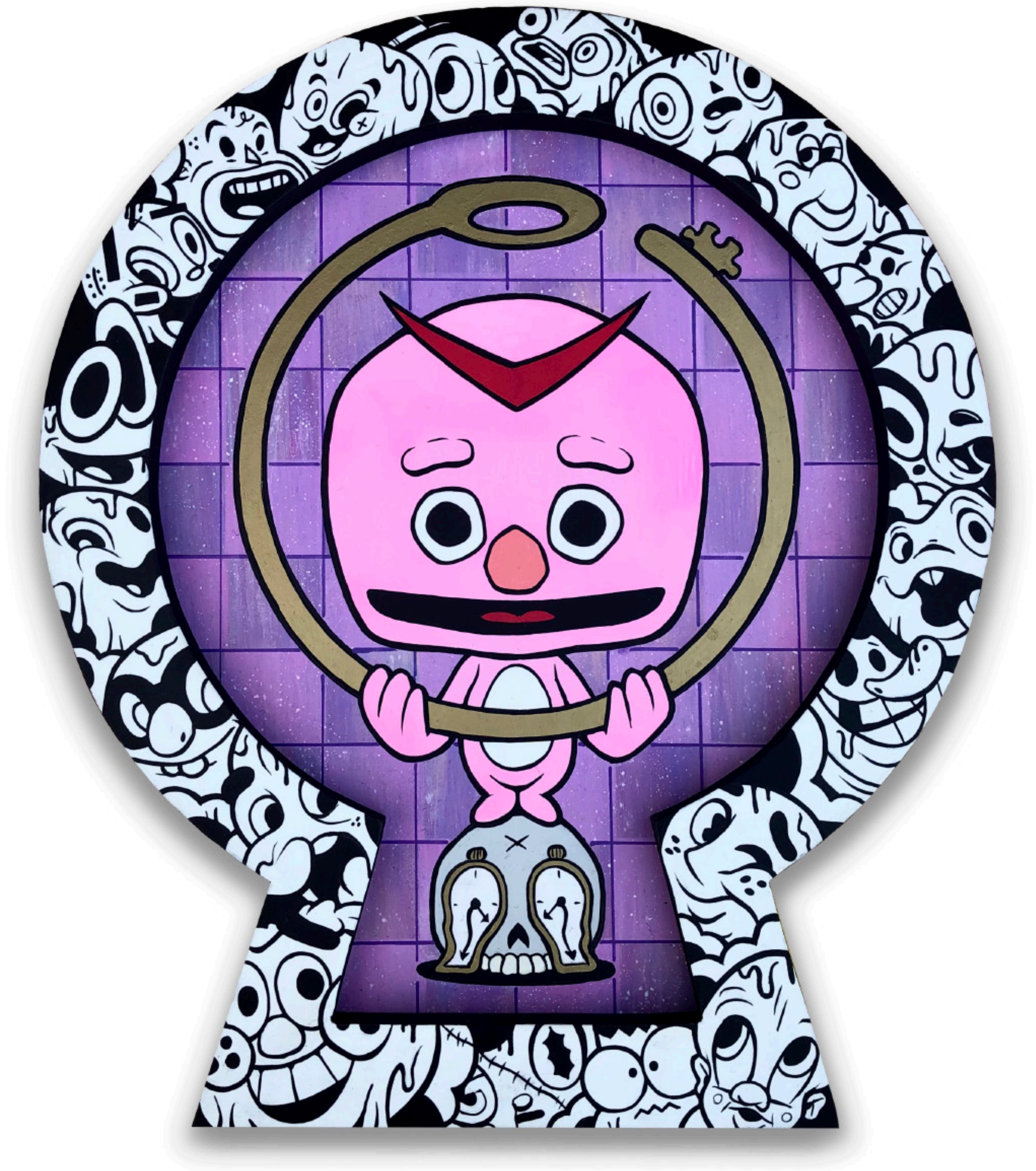
Bruce Parker - Stay Cool  
acrylic, ink on wood  
6 x 6 inches





Bruce Parker - Stay Positive  
acrylic, ink on wood  
10 x 10 inches





Bruce Parker - This Won't Work  
acrylic, ink on wood  
12 x 14 inches





Bruce Parker - Today is Saturday  
acrylic, ink on wood  
8 x 10 inches





Bruce Parker - Today is Sunday  
acrylic, ink on wood  
11 x 11 inches





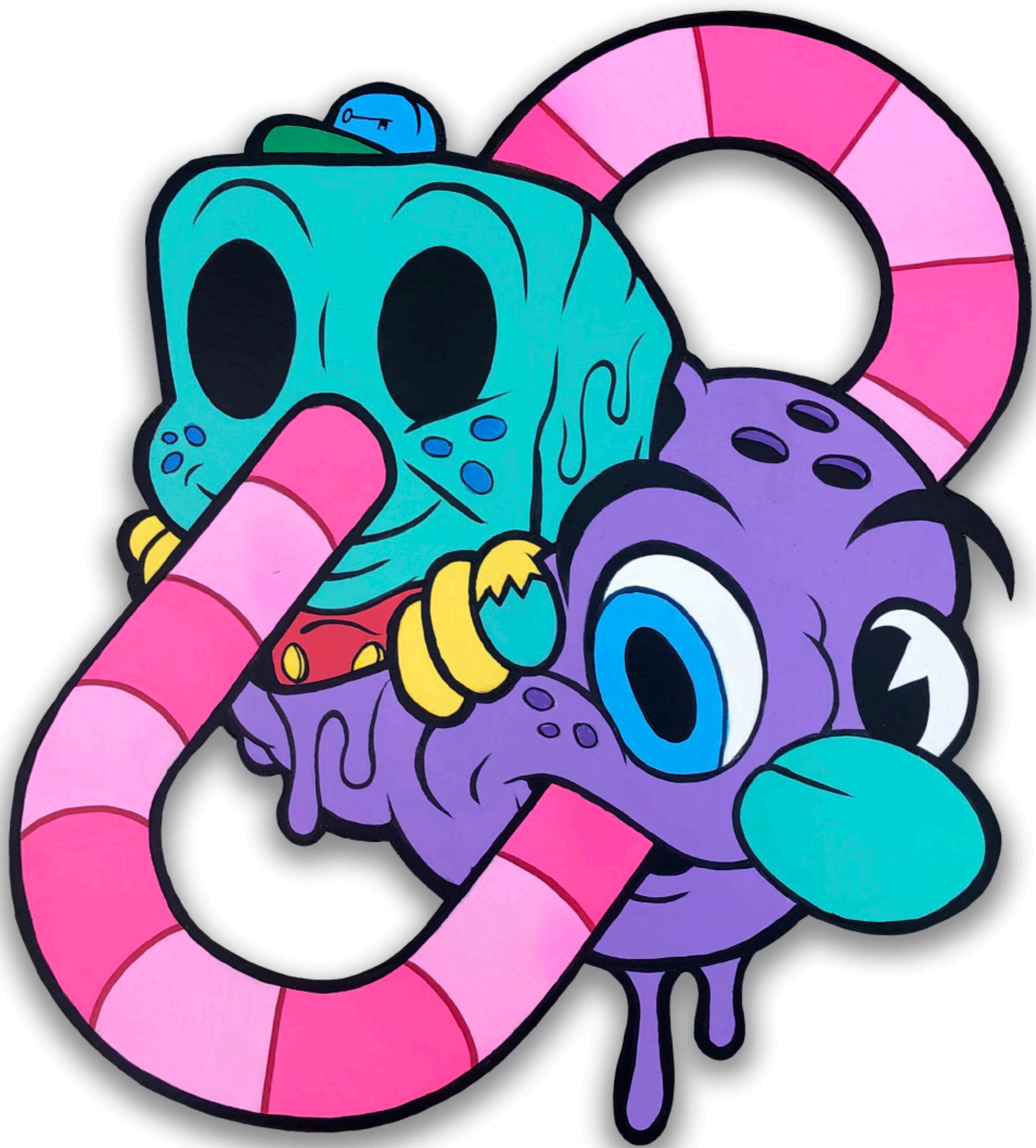
Bruce Parker - Today is Thursday  
acrylic, ink on wood  
11 x 11 inches





Bruce Parker - Today is Tuesday  
acrylic, ink on wood  
11 x 11 inches





Bruce Parker - We're in this Together  
acrylic, ink on wood  
10 x 10 inches





Bruce Parker - You'll Be Safe with Me  
acrylic, ink on wood  
13 x 7 inches  
SOLD





Visible Damage - Alchemist  
acrylic on wood  
10 x 7 inches  
SOLD





Visible Damage - Fractured  
acrylic on wood  
10 x 7 inches  
SOLD





Visible Damage - KXKVI  
acrylic, coffee on paper and panel  
12 x 12 inches  
SOLD





Visible Damage - Many Paths  
acrylic on wood  
10 x 7 inches  
SOLD





Visible Damage - Primordial Entity: Architect  
acrylic, coffee on paper and panel  
12 x 12 inches





Visible Damage - Primordial Entity: Serpent  
acrylic, coffee on paper and panel  
12 x 12 inches





Visible Damage - The Final Stage  
acrylic, coffee on paper and panel  
12 x 12 inches





Visible Damage - Third Eye  
acrylic on wood  
10 x 7 inches  
SOLD





Visible Damage - Unearthly Being: Cosmic Seer  
acrylic, coffee on paper and panel  
12 x 12 inches  
SOLD





Visible Damage - Unearthly Being: Reptilian  
acrylic, coffee on paper and panel  
12 x 12 inches





Visible Damage - Unseen Forces  
acrylic, coffee on paper and panel  
12 x 12 inches





Visible Damage - Psycosmotron  
acrylic on wood sculpture (moves and spins)  
12 x 12 x 6 inches  
SOLD





Juri Umagami - A Black and White Spaniel Pointing in a Landscape  
oil on wood  
12 x 12 inches





Juri Umagami - A Greyhound in a Landscape with a View of Windsor Castle Beyond  
oil on wood  
12 x 12 inches





Juri Umagami - A Monkey Wearing Crimson Livery Dancing with a Poodle on the Terrace of a Country House

oil on wood  
12 x 12 inches





Juri Umagami - Landscape with Chickens  
oil on wood  
12 x 9 inches





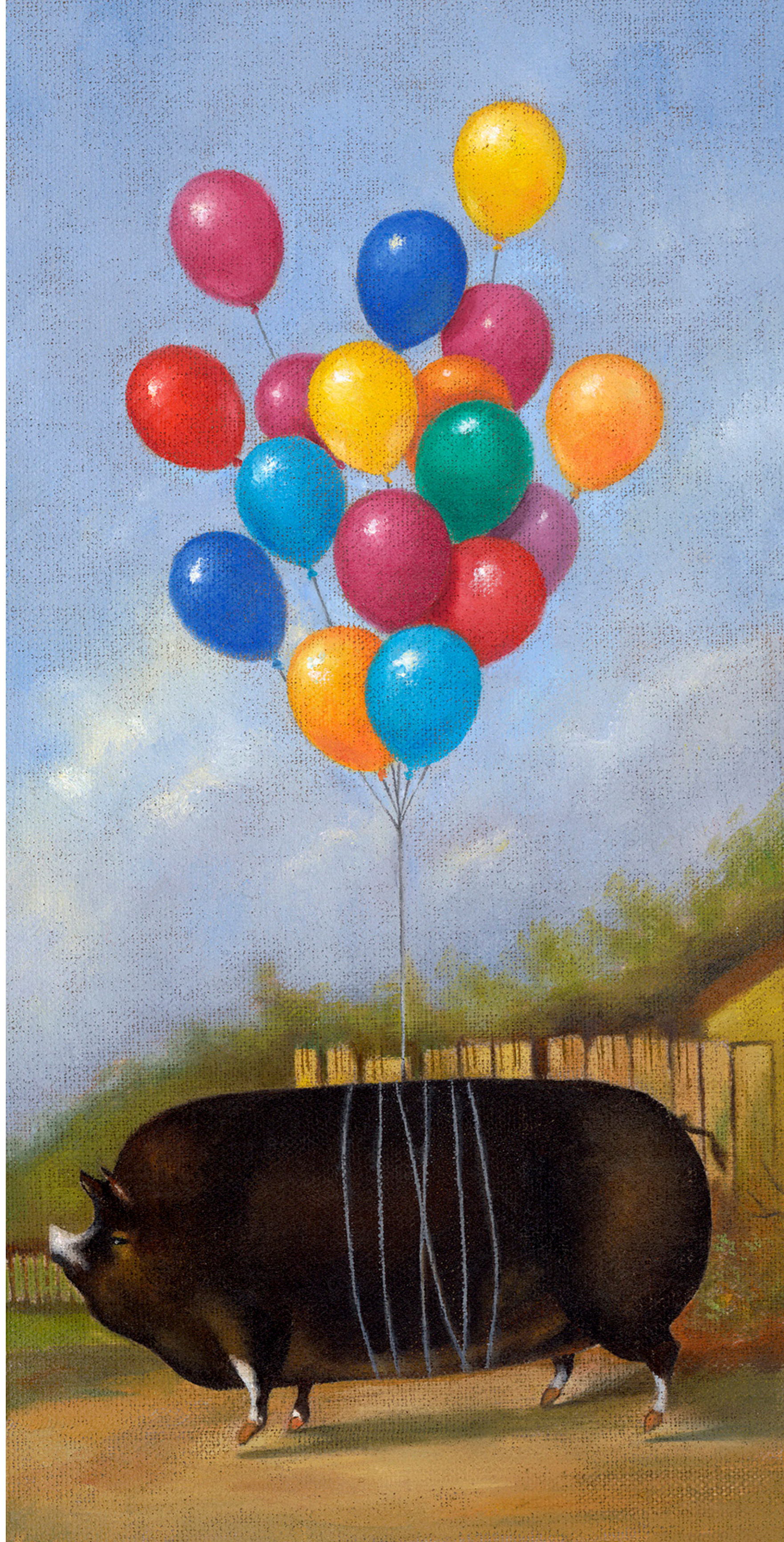
Juri Umagami - Lustre, Held by a Groom  
oil on linen  
11 x 14 inches





Juri Umagami - Prized Pig I  
oil on linen  
12 x 6 inches





Juri Umagami - Prized Pig II  
oil on linen  
12 x 6 inches





Juri Umagami - Prized Sheep  
oil on wood  
11 x 14 inches





Heath Quiel - Beefy  
oil on panel  
18 x 18 inches





Heath Quiel - Skinwalker  
oil on canvas  
16 x 20 inches





Heath Quiel - Candle  
oil on panel  
8 x 8 inches  
SOLD





Heath Quiel - buy the painting or i turn on the microwave  
oil on panel  
11 x 14 inches  
SOLD





Heath Quiel - 5 Grams of Protein  
oil on panel  
11 x 14 inches





Heath Quiel - New World Order  
oil on canvas  
36 x 36 inches





Douglas Cason - Cupid's Folly, scene five from the School of Love:  
schoolyard research  
oil on panel  
12 x 12 inches  
SOLD





Douglas Cason - Cupid's Folly,  
scene four from the School of Love: relegated to the friendzone, part II  
oil on panel  
16 x 16 inches  
SOLD





Douglas Cason - Cupid's Folly, scene six from the School of Love:  
We need more practice (recto)  
oil on panel  
12 x 12 inches  
SOLD





Douglas Cason - Cupid's Folly, scene six from the School of Love:  
We need more practice (verso)  
oil on panel  
8 x 10 inches





Douglas Cason - Cupid's Folly, scene three from the School of Love:  
relegated to the friendzone  
oil on panel  
16 x 16 inches  
SOLD





Douglas Cason - Cupid's Folly: Memento Defectum,  
(Cupid has difficulty with the concept)  
oil on panel  
12 x 12 inches





Douglas Cason - Cupid's Folly: Memento Defectum,  
(Cupid was a failure at tooth fairy school)  
oil on panel  
8 x 10 inches





Douglas Cason - Cupid's Folly: Venus and Cupid  
deliberate that awkward silence initiated by the one-eyed monster  
oil on panel  
18 x 24 inches  
SOLD





Dion Macellari - Affectionate Reflection  
acrylic on panel  
20 x 16 inches





Dion Macellari - Casual Encounter  
acrylic on panel  
20 x 16 inches





Dion Macellari - Conjuring  
acrylic on linen  
18 x 24 inches





Dion Macellari - Dialogue  
acrylic on panel  
20 x 16 inches





Dion Macellari - Dream State  
acrylic on canvas  
8 x 6 inches





Dion Macellari - Eastern Leanings  
acrylic on panel  
16 x 12 inches





Dion Macellari - Fighting  
acrylic on panel  
8 x 8 inches





Dion Macellari - Hieroglyphic Duet  
acrylic on linen  
18 x 24 inches





Dion Macellari - Lotus Leanings  
acrylic on panel  
20 x 16 inches





Dion Macellari - Peek  
acrylic on panel  
5 x 7 inches





Dion Macellari - UCS (Under Corporate Spell)  
acrylic on canvas  
24 x 30 inches





Dion Macellari - Veiled Vision  
acrylic on panel  
18 x 24 inches





Dion Macellari - Watch Her  
acrylic on panel  
9 x 12 inches





Annette Hassell - But I'm the King  
acrylic on panel  
18 x 14 inches





Annette Hassell - Cycles  
acrylic on linen  
16 x 12 inches





Annette Hassell - Excuse My Charisma  
acrylic on panel  
20 x 16 inches





Annette Hassell - Redrum  
acrylic on linen  
12 x 12 inches  
SOLD





Annette Hassell - Sparks  
acrylic on linen  
20 x 10 inches





Annette Hassell - The Golden Hour  
acrylic on linen  
12 x 12 inches





Annette Hassell - Visitors  
acrylic on linen  
12 x 12 inches